

# NVIS for Windows Test

## Contents

- NVIS for Windows Test ..... 4
  - Overview ..... 4
  - Tester Requirements..... 4
  - Functional I Description ..... 4
  - Command Line Interface..... 5
- Test Procedures ..... 6
  - Install interactively..... 6
    - Procedure..... 6
    - Expected Result..... 6
  - Enter Assigned Ethereum Address1..... 8
    - Procedure..... 8
    - Expected Result..... 8
  - Tray Icon..... 8
    - Procedure..... 8
    - Expected Result..... 8
- ON ..... 9
  - Procedure..... 9
  - Expected Result..... 9
  - Command Line: ..... 9
- Settings..... 10
  - Procedure..... 10
  - Expected Result..... 10
  - Command Line: ..... 10
- OFF ..... 10
  - Procedure..... 10
  - Expected Result..... 10
  - Command Line: ..... 11
- AUTO CONNECT ..... 11

Procedure.....	11
Expected Result.....	11
Command Line: .....	11
Reset .....	12
Procedure.....	12
Expected Result.....	12
Command Line: .....	12
Groups.....	12
Procedure.....	12
Expected Result.....	12
Command Line: .....	13
Groups Add .....	13
Procedure.....	13
Expected Result.....	13
Command Line: .....	14
Groups Select (OK).....	14
Procedure.....	14
Expected Result.....	14
Command Line: .....	15
Groups Delete .....	15
Procedure.....	15
Expected Result.....	15
Command Line: .....	15
Groups Cancel .....	15
Procedure.....	15
Expected Result.....	16
Exit.....	16
Procedure.....	16
Expected Result.....	16
Start Launch .....	17
Procedure.....	17
Expected Result.....	17
Uninstall .....	18

Procedure.....	18
Expected Result.....	18
Install from Command Line with Address.....	20
Procedure.....	20
Expected Result.....	20

# NVIS for Windows Test

## Overview

NVIS is the Invisible Internet, a Software Defined Perimeter encrypted at layer-2 for B2B networks that are the most secure alternative to (or replacement for) your Business VPN. Ideal use for a next gen solution for remote access that cannot be hacked, sniffed, tracked or censored. Great for remote desktop, P2P site-to-site instant networks

## Tester Requirements

Seeking prospective business evaluators for Beta Testing that have Windows 10, Windows 11 or Azure hardware or VMs.

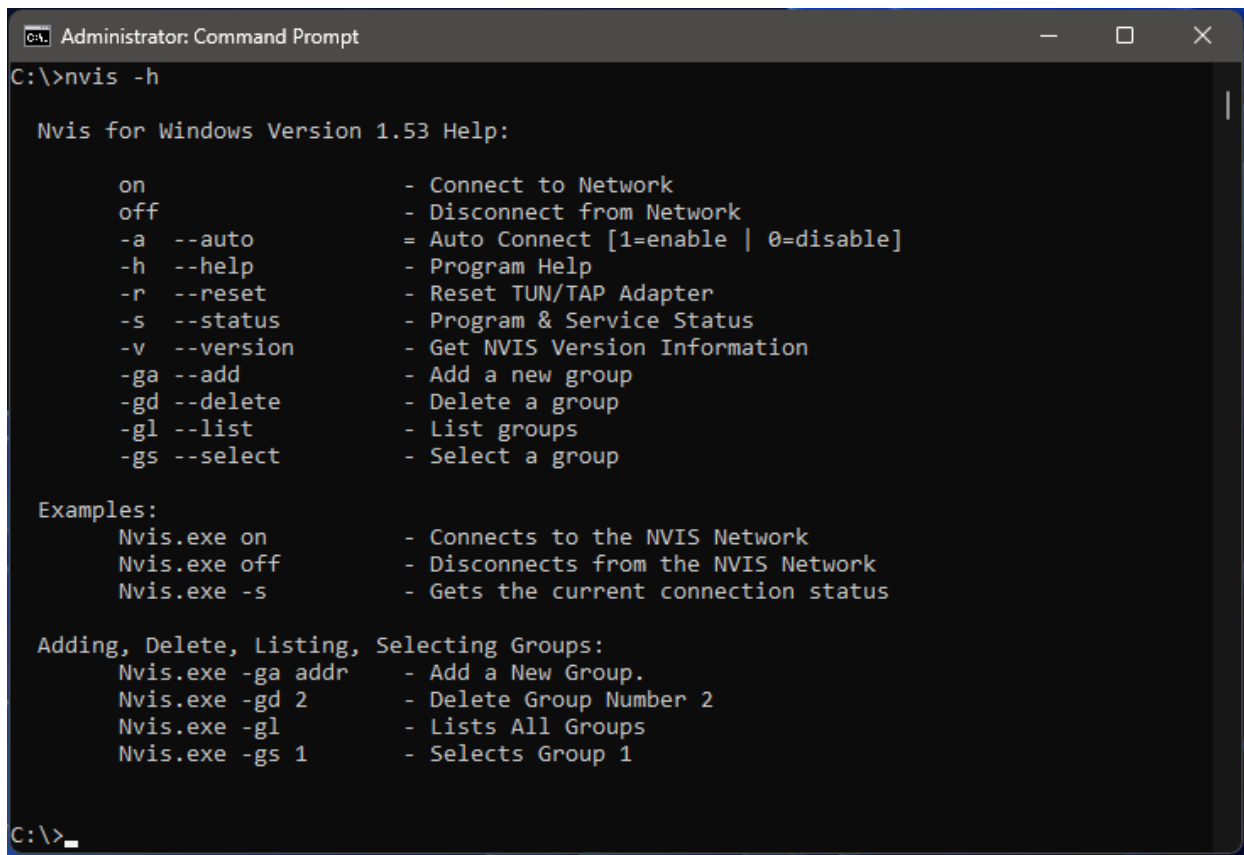
## Functional Description

The table below gives the functions/commands for the NVIS for Windows app, in the recommended test sequence. NOTE: All commands below may also be done via the command line interface (CLI).

Function/Command	Description
Install interactive	Installer binary
Enter Assigned Ethereum Address1	Prompt for Ethereum address
Tray Icon	tray icon/ menu, CLI=Nvis.exe -h
ON	Icon/menu to connect to the NVIS network, CLI=Nvis.exe on
Settings	Icon/menu dialog to show current active network, CLI=Nvis.exe -s
OFF	Disconnect from the NVIS network, CLI=Nvis.exe off
Groups	Show available profiles, CLI=Nvis.exe -gl
Groups Add	Add a profile, CLI=Nvis.exe -ga
Groups OK	Select a profile, CLI=Nvis.exe -gs number
Groups Delete	Delete a profile, CLI=Nvis.exe -gd number
Groups Cancel	Cancel groups dialog, CLI=N/A
Exit	Terminate icon/tray menu, CLI=N/A
Start Launch	Launch from Windows Start Launcher or Search
Uninstall	Uninstall NVIS for Windows
Install from Command Line	Install from CMD with Ethereum address argument

## Command Line Interface

The NVIS Client may be run from the GUI or the command line using cmd.exe or PowerShell.exe



```
C:\>nvis -h

Nvis for Windows Version 1.53 Help:

    on                - Connect to Network
    off               - Disconnect from Network
    -a --auto         = Auto Connect [1=enable | 0=disable]
    -h --help        - Program Help
    -r --reset       - Reset TUN/TAP Adapter
    -s --status      - Program & Service Status
    -v --version     - Get NVIS Version Information
    -ga --add        - Add a new group
    -gd --delete     - Delete a group
    -gl --list       - List groups
    -gs --select     - Select a group

Examples:
Nvis.exe on          - Connects to the NVIS Network
Nvis.exe off        - Disconnects from the NVIS Network
Nvis.exe -s         - Gets the current connection status

Adding, Delete, Listing, Selecting Groups:
Nvis.exe -ga addr   - Add a New Group.
Nvis.exe -gd 2      - Delete Group Number 2
Nvis.exe -gl        - Lists All Groups
Nvis.exe -gs 1      - Selects Group 1

C:\>
```

## Test Procedures

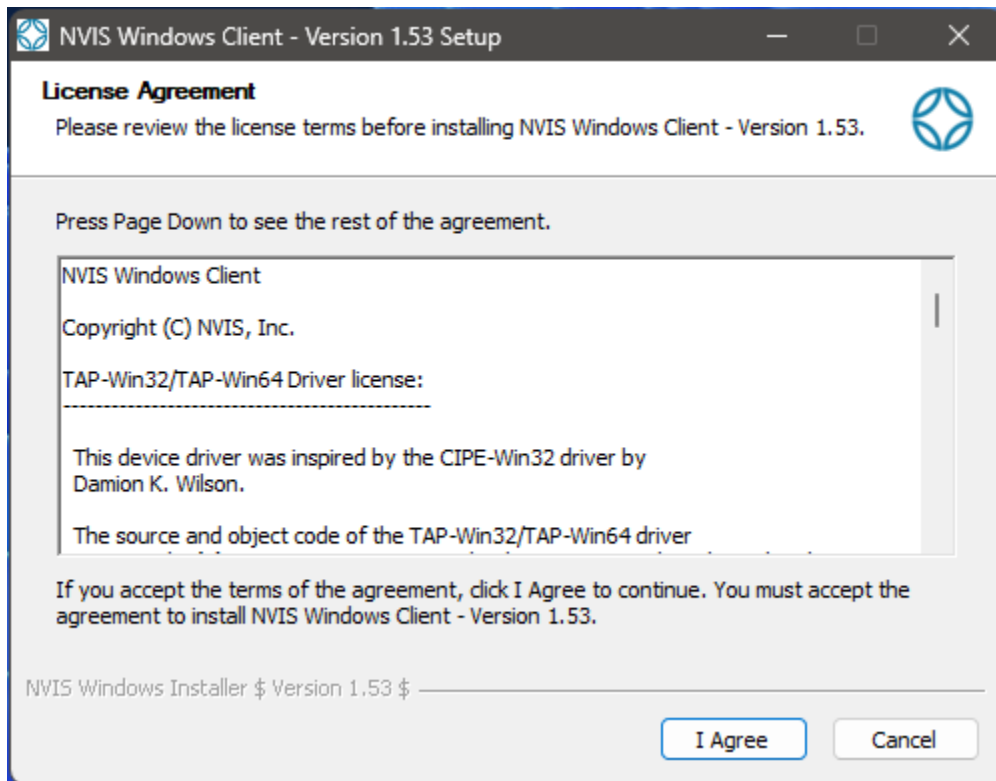
### Install interactively

#### Procedure

Execute installer binary, e.g. nvis\_windows\_inst\_1.53-64bit.exe

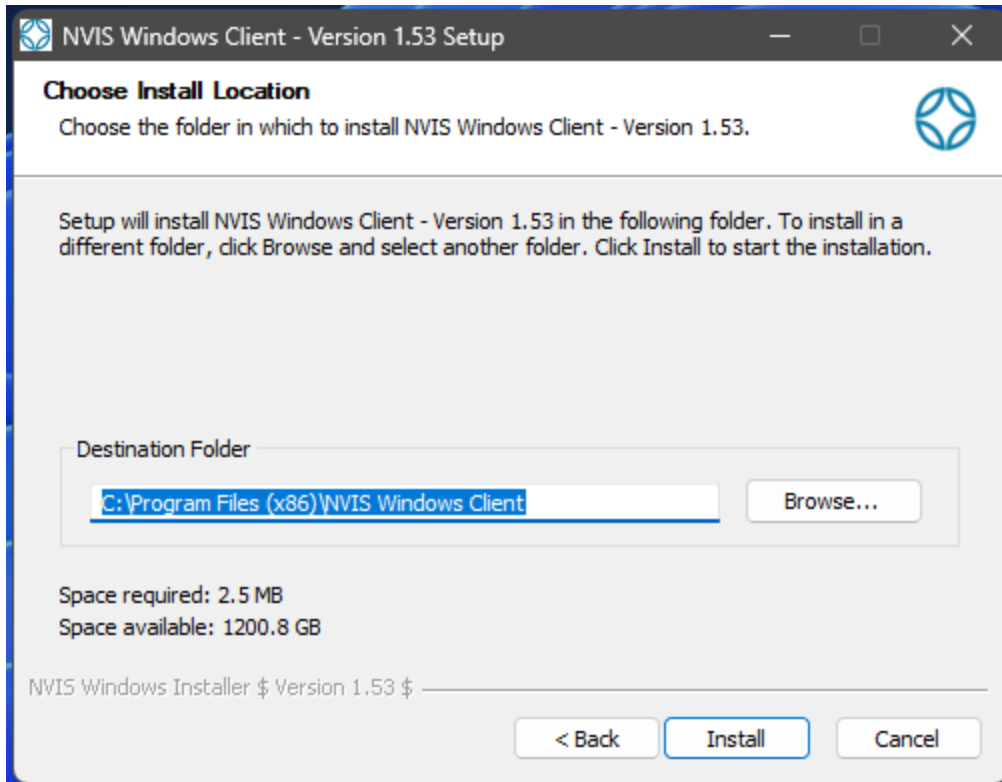
#### Expected Result

License pops up as shown below:



Press "I Agree" to continue

The installation location is displayed



Press "Install" to continue

The screen will go blank, and a dialog will ask if you want this software to be able to modify your system. Answer Yes.

## Enter Assigned Ethereum Address1

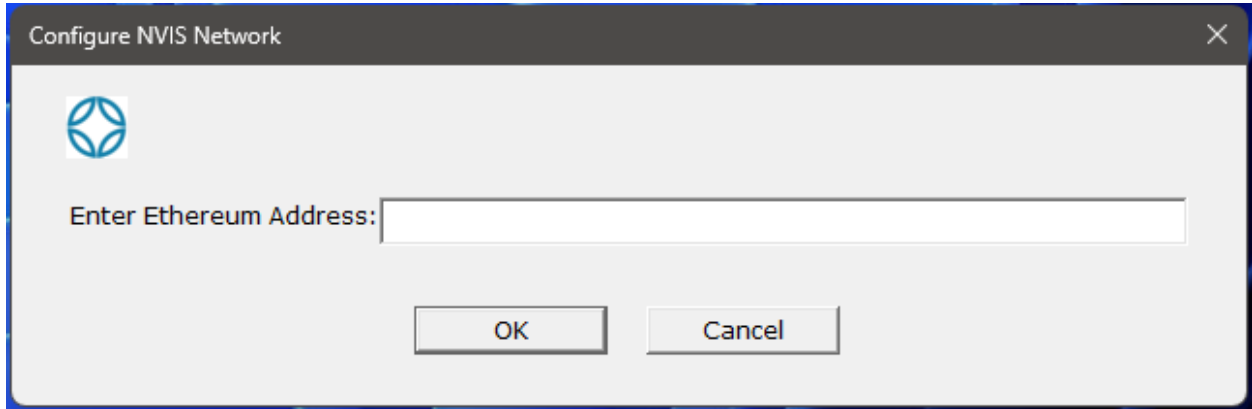
### Procedure



After installation, double-click on the desktop icon you will be prompted to enter your pre-assigned Ethereum Address1, which is your cross-platform Universally Unique Identifier..

### Expected Result

Popup will show as



Enter the assigned Ethereum address and press OK.

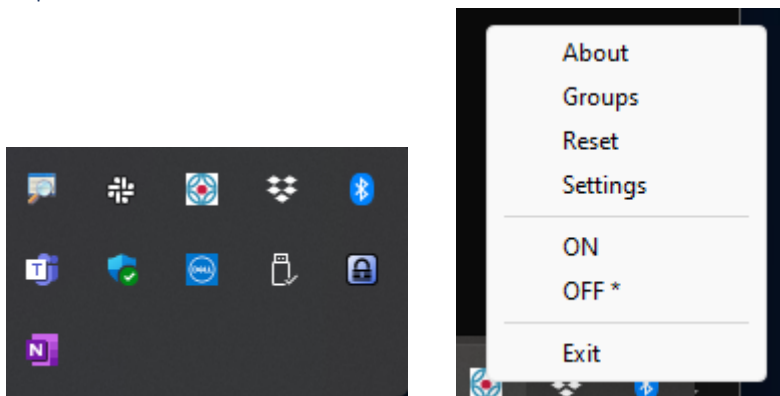
## Tray Icon

The desktop has a popup showing tray icons, including NVIS if it is installed.

### Procedure

Select the up arrow on the bottom right of the desktop tray. A popup will show a small icon with the NVIS logo.

### Expected Result



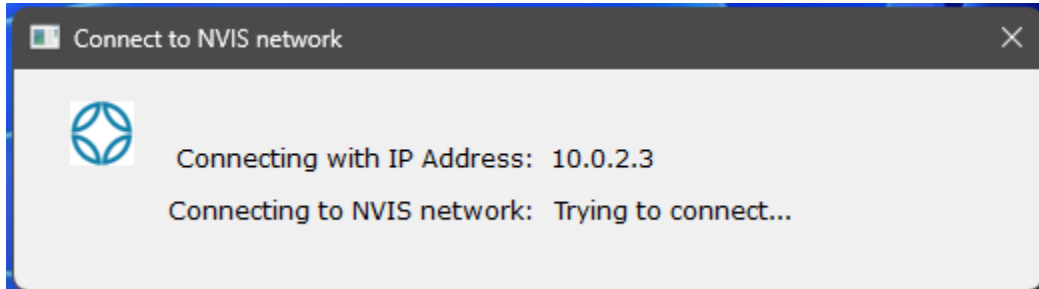


ON

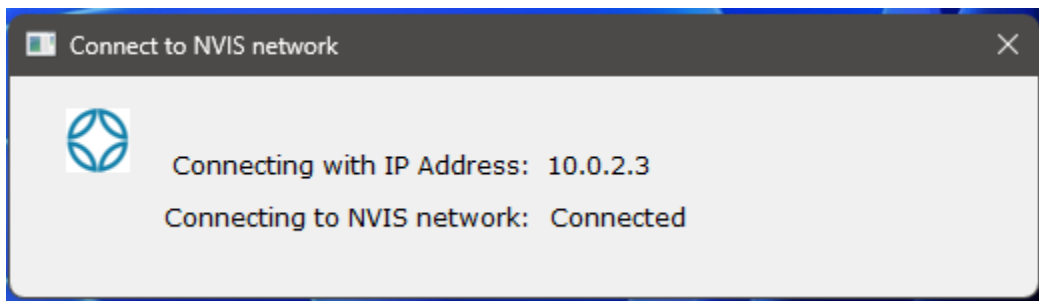
Procedure

From the tray icon/menu, select ON.

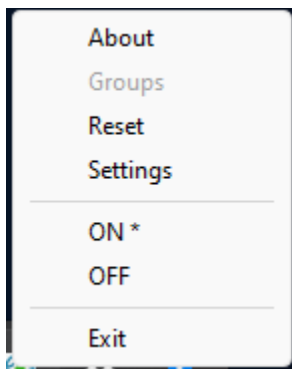
Expected Result



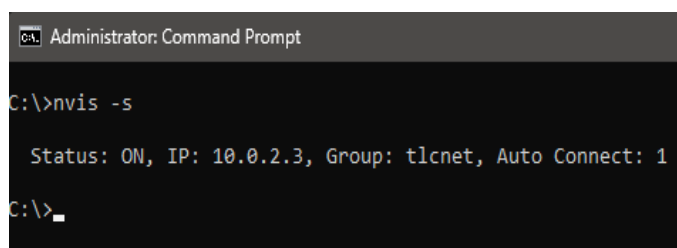
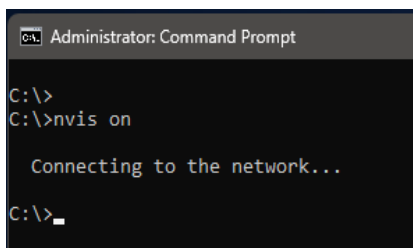
When it is on the NVIS network the dialog will change to Connected.



The tray icon/menu with show ON with an asterisk:



Command Line:



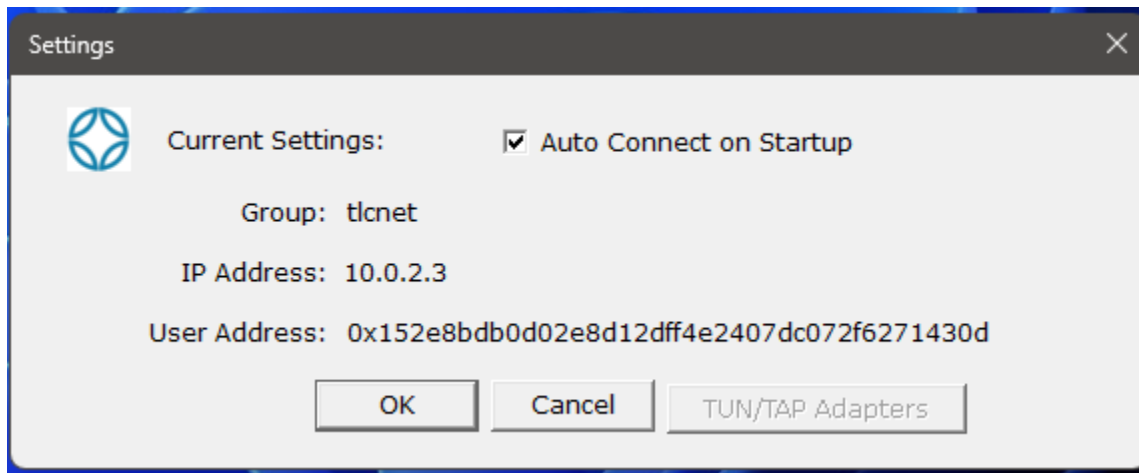
## Settings

### Procedure

Click on the Settings choice in the tray icon menu.

### Expected Result

A popup will show the current profile connection settings.



Press OK or Cancel to go back to the menu.

### Command Line:

```
Administrator: Command Prompt
C:\>nvis -s
  Status: ON, IP: 10.0.2.3, Group: tlcnet, Auto Connect: 1
C:\>
```

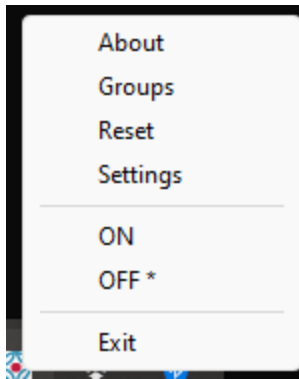
## OFF

### Procedure

Select OFF from the tray icon/menu.

### Expected Result

The app disconnects from the NVIS network, and an asterisk appears to indicate it is OFF.



Command Line:

```
Administrator: Command Prompt
C:\>nvis off
C:\>nvis -s
    Status: OFF, IP: 10.0.2.3, Group: tlcnet, Auto Connect: 1
C:\>
```

## AUTO CONNECT

### Procedure

NOTE: Auto Connect is enabled by default by the installer. Open the Settings dialog and uncheck the check box hit OK and exit NVIS and restart the NVIS Client. Next, open Settings again and check the check box, hit OK and exit NVIS and restart the NVIS Client.

### Expected Result

When the check-box is unchecked, NVIS Client should not automatically connect to the NVIS network when started. When the check-box is checked, the NVIS Client should automatically connect to the NVIS network.

Command Line:

```
Administrator: Command Prompt
C:\>nvis -s
    Status: OFF, IP: 10.0.2.3, Group: tlcnet, Auto Connect: 1
C:\>nvis -a 0
    Setting Auto Connect to 0
C:\>nvis -s
    Status: OFF, IP: 10.0.2.3, Group: tlcnet, Auto Connect: 0
C:\>
```

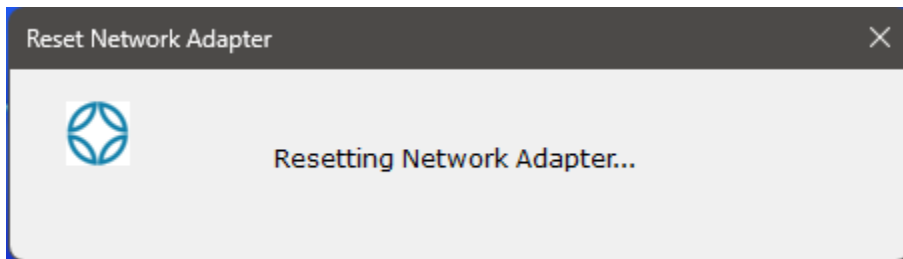
## Reset

### Procedure

Select Reset from the tray icon/menu.

### Expected Result

The app resets the network adapter. If currently ON, should reconnect after reset.



### Command Line:

```
Administrator: Command Prompt
C:\>nvis -r
Resetting NVIS Network Adapter...
C:\>
```

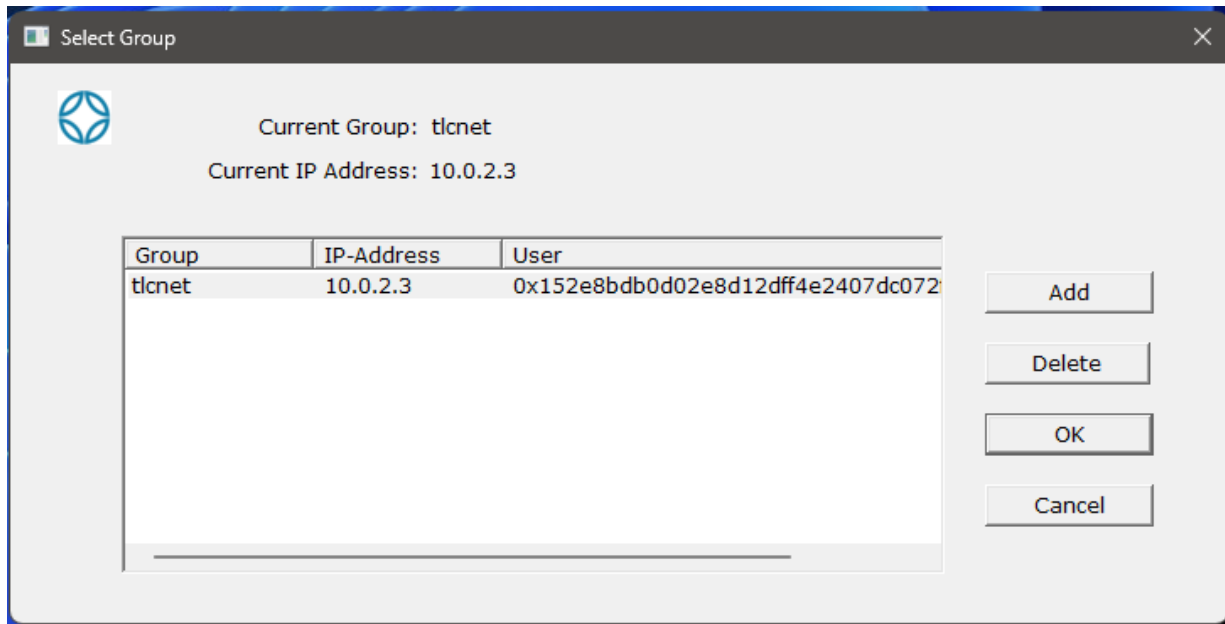
## Groups

### Procedure

While NVIS is OFF, the tray icon menu will allow you to select Groups. Click on it.

### Expected Result

A popup will show the available list of saved profiles.



Command Line:

```
C:\>nvis -gl  
  
Group List: (* - current selected group)  
  
* 0) Group: tlcnet, IP: 10.0.2.3, User: 0x152e8bdb0d02e8d12dff4e2407.....  
  
C:\>
```

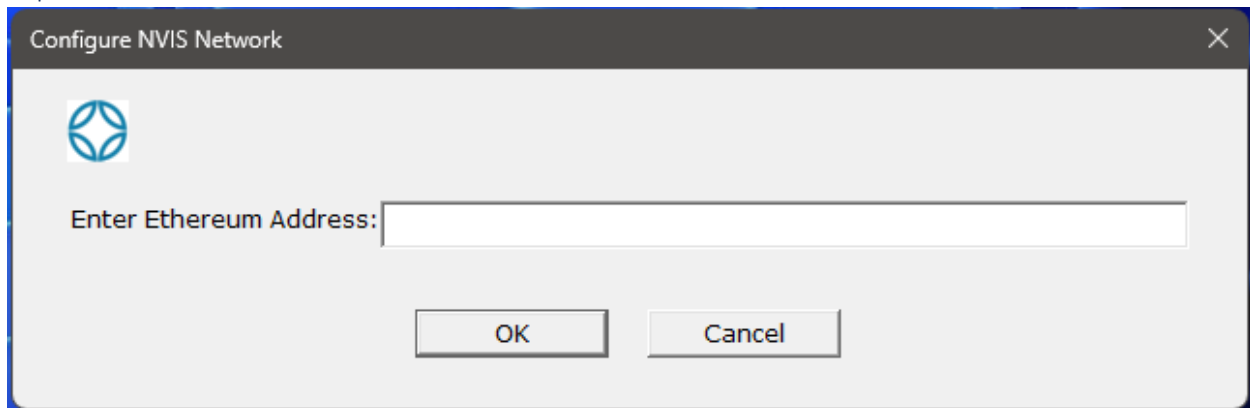
### Groups Add

This allows you to add multiple profiles. For this test, you will be prompted for your pre-assigned Ethereum Address2.

### Procedure

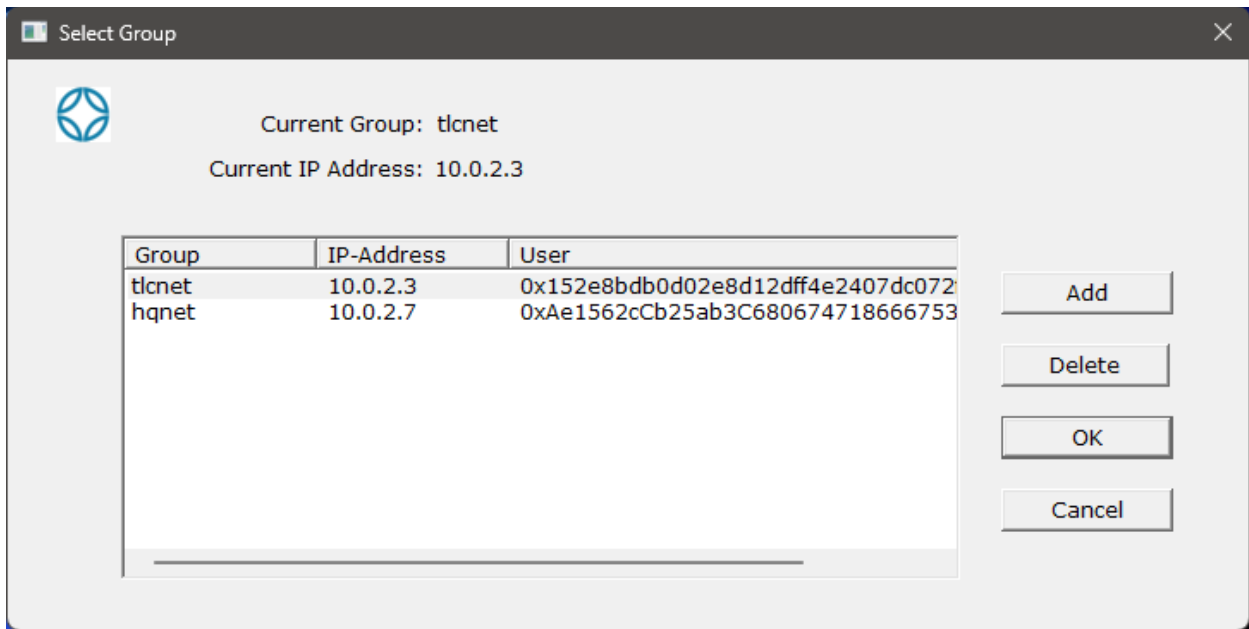
Press the Add button.

### Expected Result



Enter Ethereum Address.

You will now see the associated security context (group and IP) added to the list.



Command Line:

```
C:\>nvis -ga 0xAe1562cCb25ab3C68067471.....  
  
New User Group Added...  
  
Group List: (* - current selected group)  
  
* 0) Group: tlcnet, IP: 10.0.2.3, User: 0x152e8bdb0d02e8d12dff4e2....  
1) Group: hqnet, IP: 10.0.2.7, User: 0xAe1562cCb25ab3C68067471.....  
  
C:\>
```

Groups Select (OK)

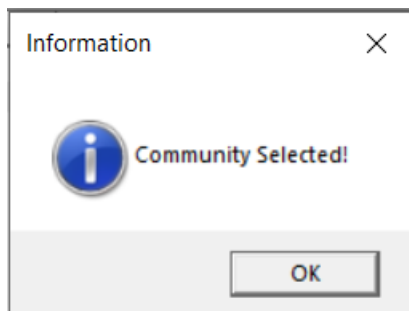
Lets you choose the active group.

Procedure

Press OK

Expected Result

A dialog pops up:



Press OK

Go back the tray icon menu and press Settings. A new dialog should popup showing the new profile as the Current Settings.

Command Line:

```
C:\>nvis -gs 1

New Group Selected...

Group List: (* - current selected group)

  0) Group: tlcnet, IP: 10.0.2.3, User: 0x152e8bdb0d02e8d12dff4e2407.....
* 1) Group: hqnet, IP: 10.0.2.7, User: 0xAe1562cCb25ab3C68067471866.....

C:\>|
```

## Groups Delete

This allows you to remove a profile in the list.

Procedure

Select the desired profile to remove. Press the Delete button.

Expected Result

The profile is removed from the list.

Command Line:

```
C:\>nvis -gd 1

Removing Group Entry...

Group List: (* - current selected group)

* 0) Group: tlcnet, IP: 10.0.2.3, User: 0x152e8bdb0d02e8d12dff4e2407.....

C:\>|
```

## Groups Cancel

Close the profile list dialog.

Procedure

Press the Cancel button.

#### Expected Result

The groups list popup closes.

#### Exit

Shuts down the NVIS GUI.

#### Procedure

Press the Exit button in the tray icon menu.

#### Expected Result

Tray icon menu disappears.



## Start Launch

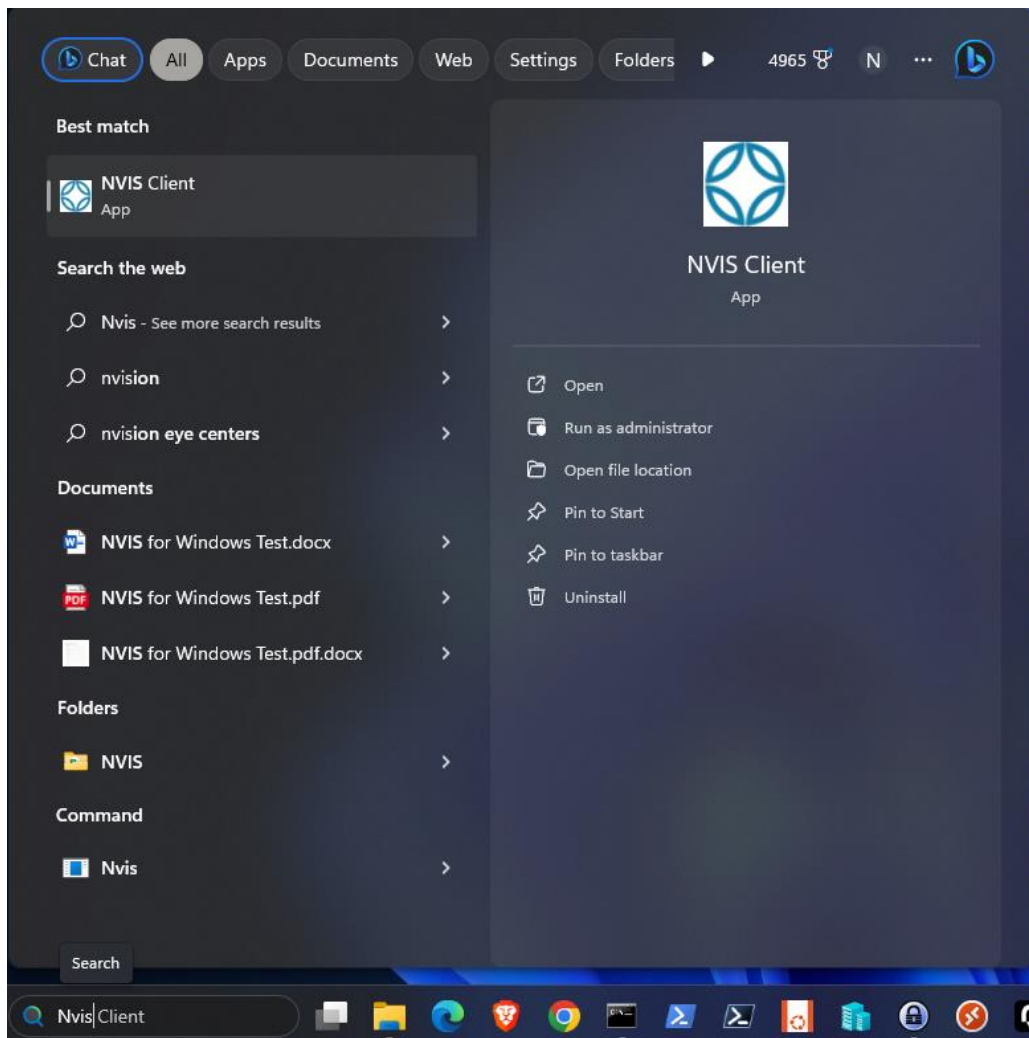
Search for NVIS to launch

## Procedure

Go to the bottom left desktop tray. Enter NVIS.

## Expected Result

The NVIS Client is displayed



Press the return key or select with the mouse.

Dialog will appear asking if you want to allow NvisClient to run on the system.

Press Yes

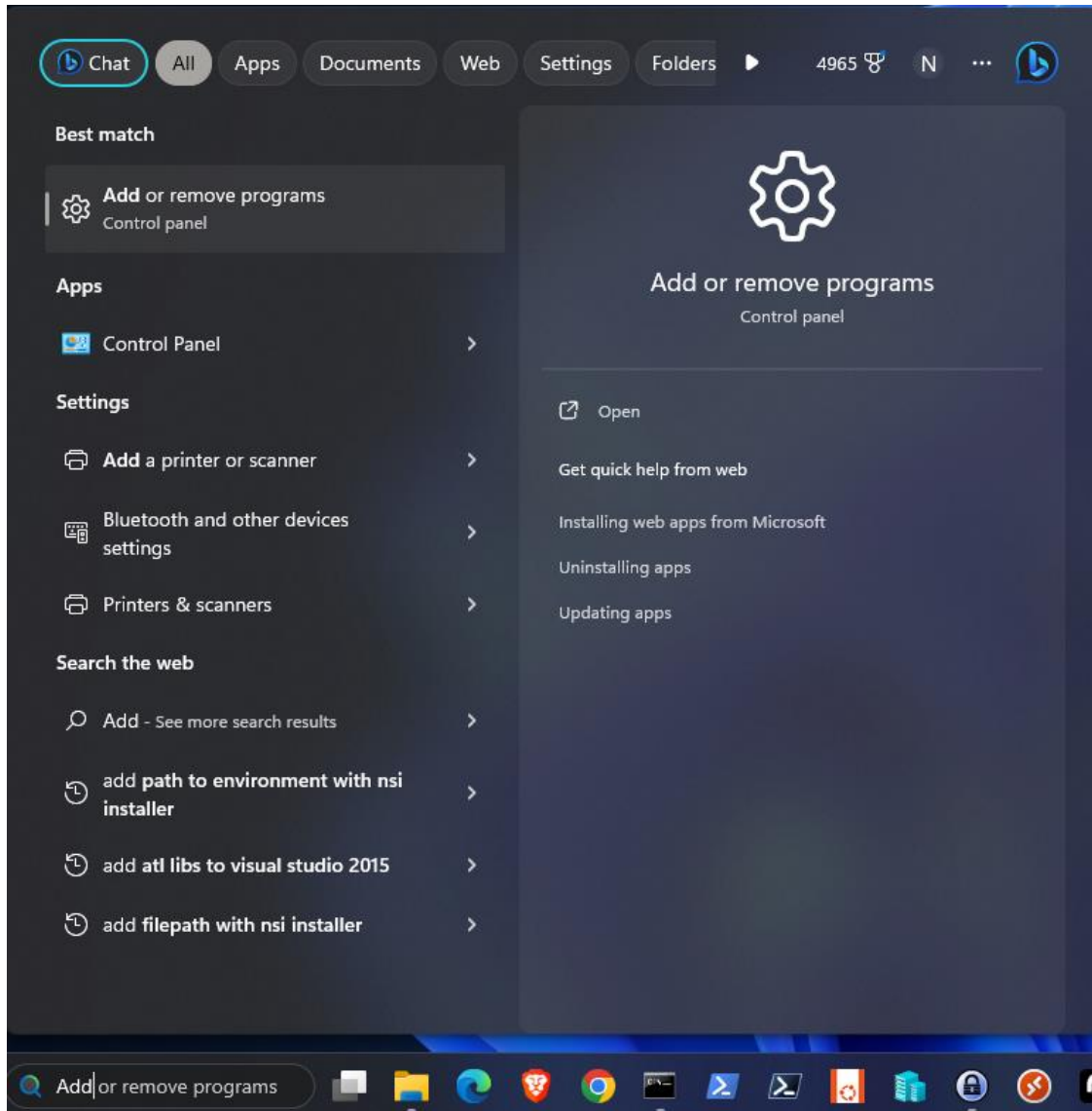
Tray icon will be added.

## Uninstall

### Procedure

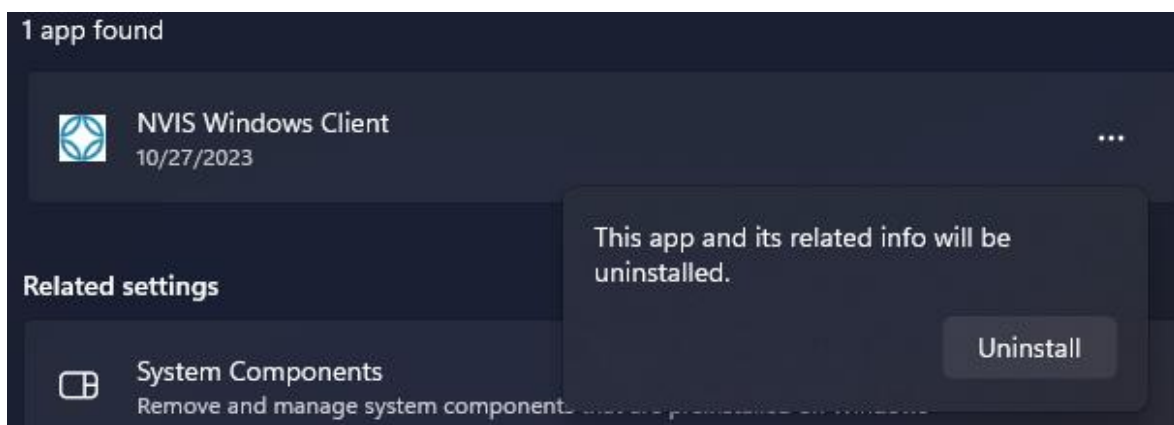
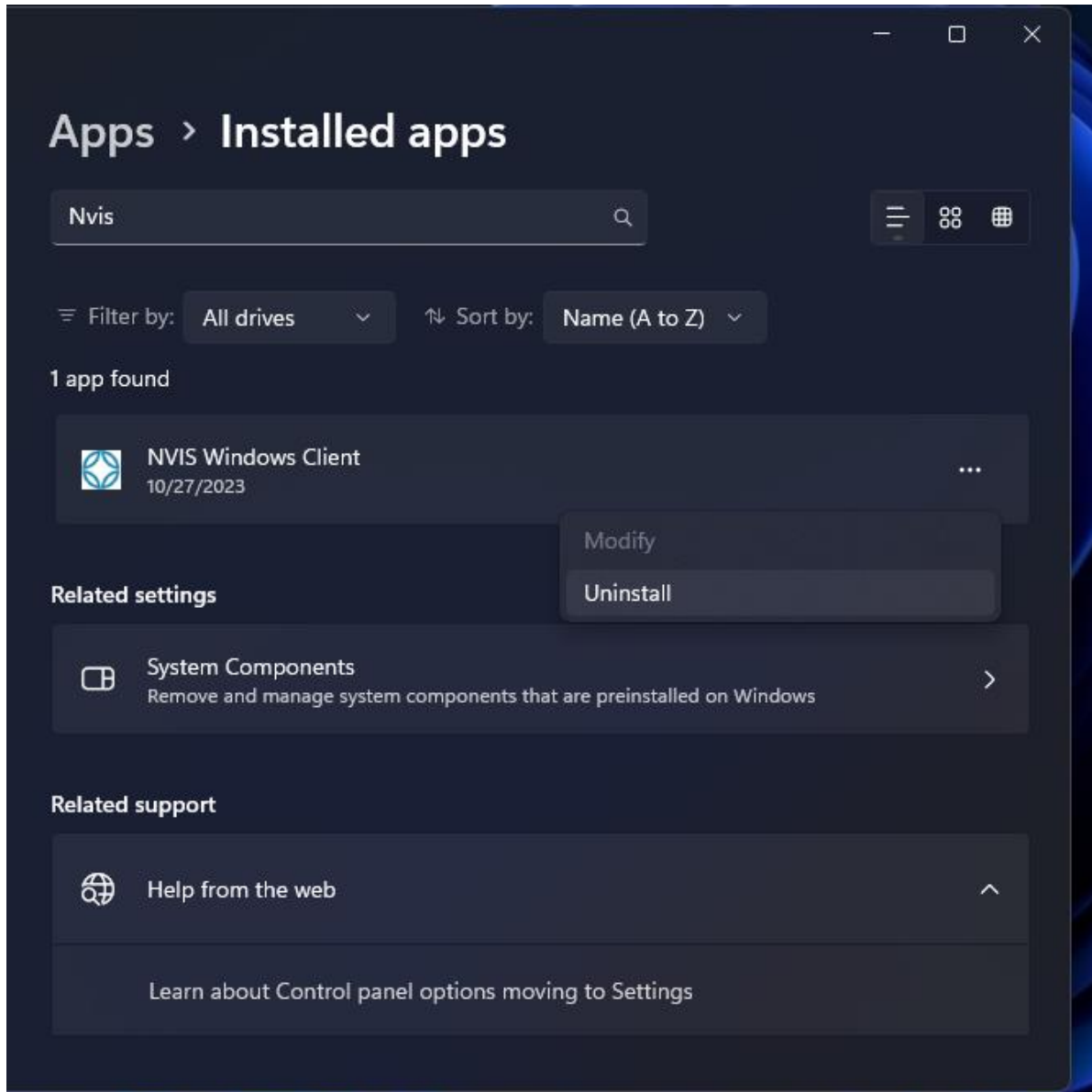
From the search menu, type “Add” and the Add or remove programs should appear:

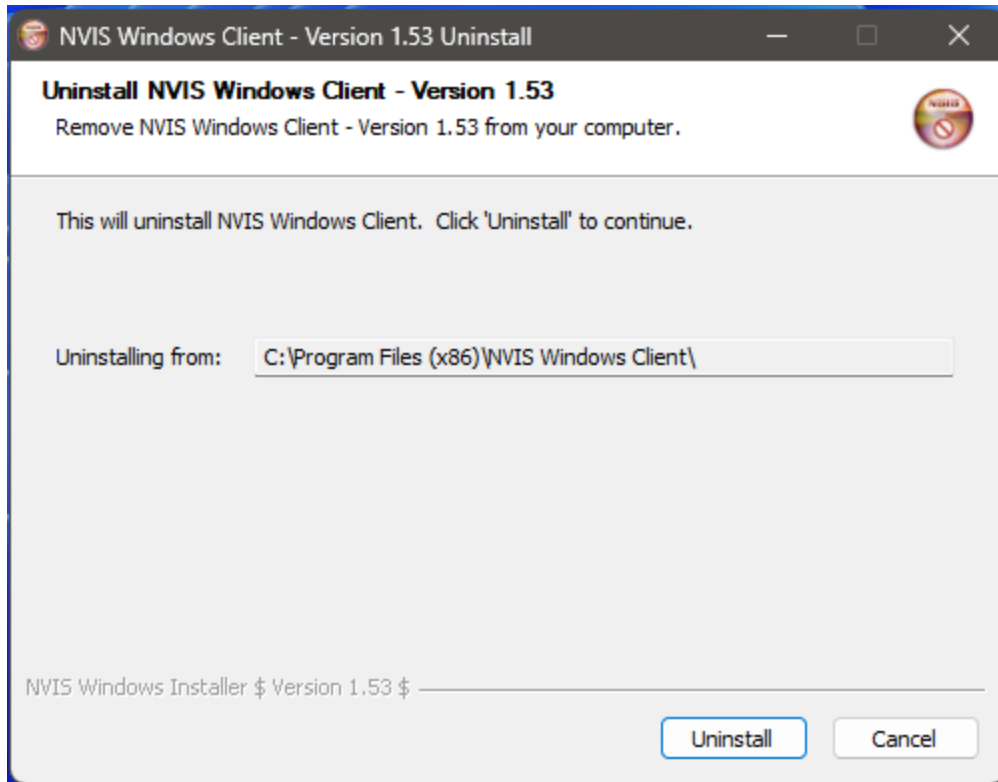
### Expected Result



Hit enter or select with the mouse “Add or remove programs.”

In the search window type Nvis then click the 3-dots, then select Uninstall:





Press Uninstall button.

### [Install from Command Line with Address](#)

#### Procedure

To install from the cmd prompt, enter the installer file name with the assigned address so there will be no prompt:

```
nvis_windows_inst_1.53-64bit.exe -a <address>
```

#### Expected Result

Installation will continue normally and NOT prompt for Ethereum address, but address will be configured.